



What is the Chattahoochee Fall Line Conservation Partnership?

The Chattahoochee Fall Line Conservation Partnership (CFLCP) is working to establish a conservation corridor that restores longleaf pine and is managed to conserve the natural heritage and quality of life of the Chattahoochee Fall Line Region. Partners include private landowners, nonprofit organizations, public agencies, elected officials and community leaders from all over West Georgia and East Alabama.



Our vision is a sustainable landscape of native wildlife and plant communities including: healthy longleaf pine forests, streams, wetlands and working lands. Such a landscape supports forestry, farming, hunting, outdoor recreation and tourism, while providing a buffer of conservation lands around military training activities on Fort Moore.

Where is the Chattahoochee Fall Line and why is it important?

The "Fall Line" is an ancient shoreline that extends across the Southeast where clay soils give way to sandier soils, and rivers and streams "fall" from higher to lower elevations. In Georgia and Alabama it stretches from Augusta to Columbus and into Alabama west of Montgomery. The Chattahoochee Fall Line is the area where the Chattahoochee River watershed overlaps the Fall Line.



For centuries, families have enjoyed the natural beauty and open spaces of the Chattahoochee Fall Line. It is a place where longleaf pine forests provide shelter for rare gopher tortoises and red-

cockaded woodpeckers, and provide a hunting ground for bobwhite quail and white-tailed deer. It is a place where wetlands showcase unusual pitcher plants and wild orchids. It is a place where people live off the land and actively manage their forests and farms. Today, a growing population and expanding development are compromising the character of the Chattahoochee Fall Line.

The Chattahoochee Fall Line Conservation Partnership believes that by working together we can leave future generations in West Georgia and East Alabama with healthy land, clean water and a strong rural economy.



Longleaf Pine Forest



Chattahoochee FALL LINE Conservation PARTNERSHIP

*Working with landowners
and communities
to conserve the Fall Line's
natural heritage and
quality of life.*

CFLCP PARTNERS

- American Forest Foundation
- Atlanta Botanical Garden
- Chattahoochee River Conservancy
- Georgia-Alabama Land Trust*
- City of Columbus
- Coalition for Sound Growth
- Columbus State University
- Georgia Dept. of Natural Resources*
- Georgia Forestry Commission*
- The Jones Center at Ichauway*
- The Longleaf Alliance*
- MeadWestvaco Foundation
- National Fish and Wildlife Foundation
- National Wild Turkey Federation
- Natural Resources Conservation Service*
- Oxbow Meadows Environmental Center
- Private Landowners
- Southern Company
- The Conservation Fund
- The Nature Conservancy*
- The Trust for Public Land
- Trees Columbus
- Tuskegee University
- Tuskegee National Forest
- U.S. Army*
- U.S. Fish and Wildlife Service*

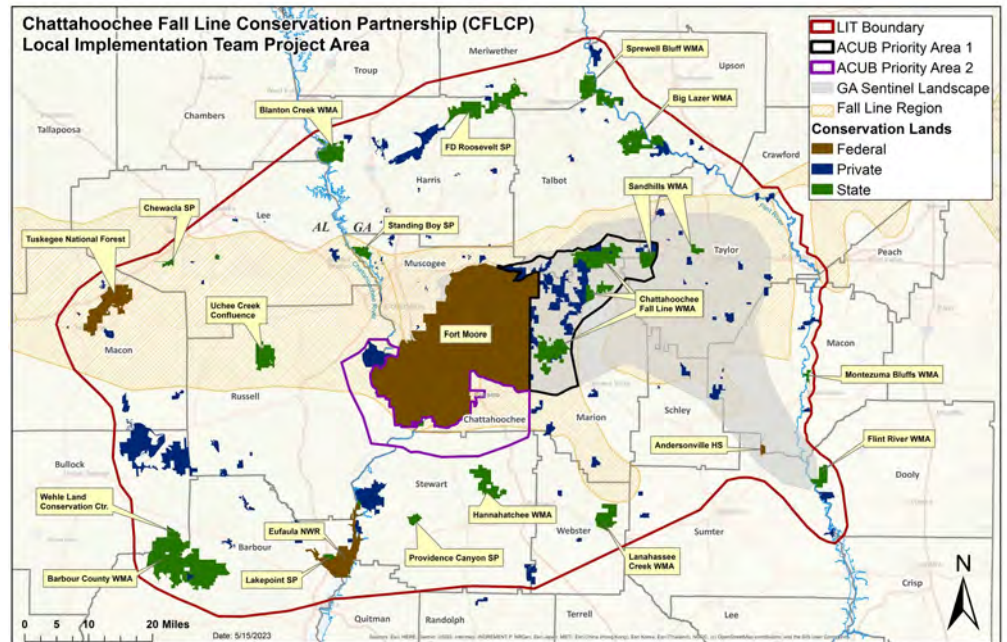
*Steering committee member**

CONTACT US

**Chattahoochee Fall Line
Conservation Partnership (CFLCP)**
 Spencer Environmental Center
 303 12th Street (physical address)
 Columbus, Georgia 31901
 PO Box 1531 (mailing address)
 Columbus, Georgia 31902
 web: www.CFLCP.org
 email: info@CFLCP.org
 phone: (706) 571-2500

What is the CFLCP's goal?

The CFLCP Partners are working together to encourage the protection, restoration and management of up to 75,000 acres around Ft. Moore explicitly for conservation purposes. This conservation corridor will provide a buffer of natural lands between active military training and daily life outside the boundaries of the installation while protecting the very unique natural heritage of the region.



CFLCP Partners recognize the full rights of individual land managers and neighboring private property owners to pursue their own interests and objectives on their land.



Sweet Pitcher Plant



Red-Cockaded Woodpecker



Gopher Tortoise

How can the CFLCP help you?

- Would you like to learn more about the amazing plants and unique animals of the Chattahoochee Fall Line through an outreach program?
- Do you need technical assistance to restore and manage longleaf pine on your property?
- Are you interested in understanding how a prescribed fire program can benefit your forested land?
- Do you want to know more about conservation easements and other land conservation opportunities?
- Do you have other questions about the Chattahoochee Fall Line Conservation Partnership?

Please contact us for further information.



Prescribed Fire